

[2016-New Latest GreatExam 70-462 Exam Free 70-462 Dumps Download (121-140)]

I've been taking on some Microsoft certifications recently, and my latest success is passing the 70-462 exam, earning me the Microsoft Specialist. As all Microsoft certification exams, this exam covers a huge amount of information and content. As a result of this, a variety of materials and sources need to be studied in order to get the level understanding and memorization necessary to pass the exam. Now that I've passed the exam, I'd share that I used GreatExam 70-462 practice test.

QUESTION 121You administer a Microsoft SQL Server 2012 instance that has multiple databases.You have a two-node SQL Server failover cluster.The cluster uses a storage area network (SAN).You discover I/O issues. The SAN is at capacity and additional disks cannot be added.You need to reduce the I/O workload on the SAN at a minimal cost.What should you do? A. Move user databases to a local disk.B. Expand the tempdb data and log files.C. Modify application code to use table variables.D. Move the tempdb files to a local disk.
Answer: B

QUESTION 122You administer a Microsoft SQL Server 2012 database that includes a table named Application.Events. Application.Events contains millions of records about user activity in an application.Records in Application.Events that are more than 90 days old are purged nightly.When records are purged, table locks are causing contention with inserts.You need to be able to modify Application.Events without requiring any changes to the applications that utilize Application.Events.Which type of solution should you use? A. Partitioned tablesB. Online index rebuildC. Change data captureD. Change tracking Answer: A

QUESTION 123Drag and Drop QuestionsYou administer a Microsoft SQL Server 2012 instance.An application executes a large volume of dynamic queries.You need to reduce the amount of memory used for cached query plans.What should you do? (To answer, move the appropriate statements from the list of statements to the answer area and arrange them in the correct order.

Answer

EXEC sp_configure 'ad hoc distributed queries', 1

EXEC sp_configure 'optimize for ad hoc workloads', 1

EXEC sp_configure 'show advanced options', 1; RECONFIGURE

EXEC sp_updatestats

EXEC sp_configure 'recovery interval', 75

RECONFIGURE

DBCC DROPCLEANBUFFERS

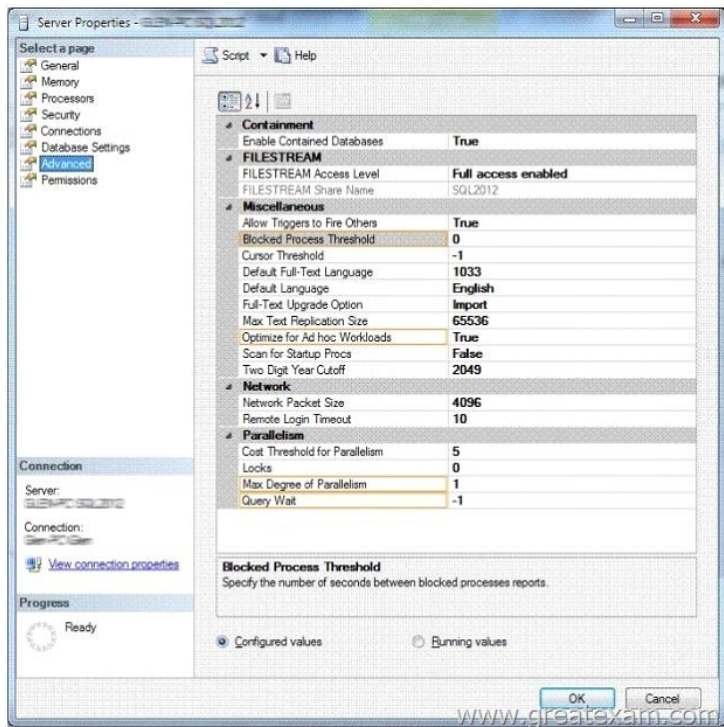
EXEC sp_configure 'show advanced options', 1; RECONFIGURE

EXEC sp_configure 'optimize for ad hoc workloads', 1

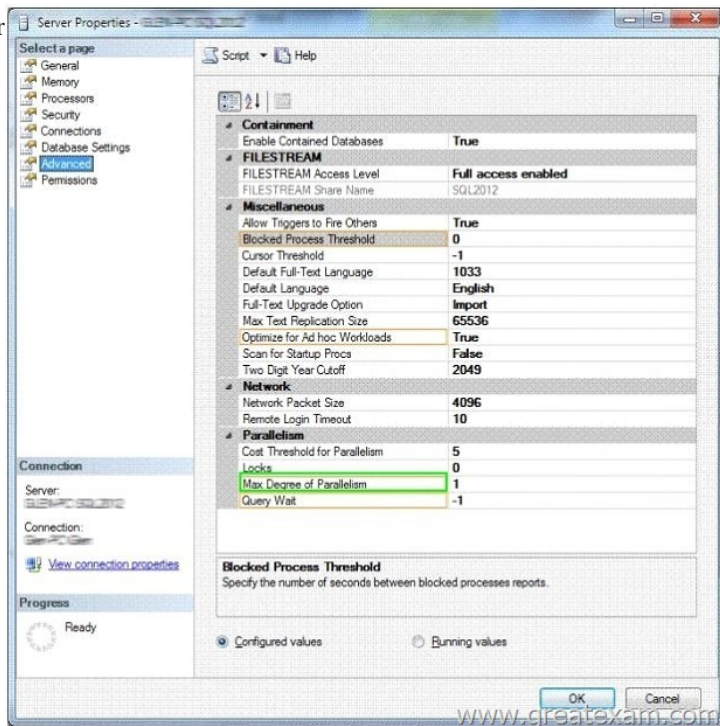
RECONFIGURE

www.greatexam.com

QUESTION 124Hotspot QuestionYou administer a Microsoft SQL Server 2012 database instance.The instance is running on a server with the following configuration:- 1TB RAM- SAN storage for database and log files- 4 quad-core processors- 64-Bit Windows 2008R2 operating systemThis instance hosts a database with large partitioned tables.Users report that complex queries are taking a long time to complete.While troubleshooting, you discover that CPU utilization is low (less than 20 percent), disk activity is low (little or no waiting processes), and no significant blocking is occurring.You need to ensure that the instance can process queries as quickly and efficiently as possible.Which setting should you configure?



Answer



QUESTION 125 You administer a Microsoft SQL Server 2012 environment. One of the SQL Server 2012 instances contains a database named Sales. You plan to migrate Sales to Windows Azure SQL Database. To do so, you need to implement a contained database. What should you do? (Each correct answer presents part of the solution. Choose all that apply.)
A. Set database containment to AZURE.
B. Enable server property contained database authentication.
C. Disable server property cross db ownership chaining.
D. Set database containment to PARTIAL.
E. Disable server property contained database authentication.
F. Set database containment to FULL.
Answer: BD

QUESTION 126 You administer a Microsoft SQL Server 2012 database named Contoso on a server named Server01. You need to track all SELECT statements issued in the Contoso database only by users in a role named Sales. What should you create?
A. An Alert
B. A Resource Pool
C. An Extended Event session
D. A Server Audit Specification
E. A SQL Profiler Trace
F. A Database Audit Specification
G. A Policy
H. A Data Collector Set
Answer: F

QUESTION 127You administer a Microsoft SQL Server 2012 database named Contoso on a server named Server01.You need to collect data for a long period of time to troubleshoot wait statistics when querying Contoso.You also need to ensure minimum impact to the server.What should you create? A. An AlertB. A Resource PoolC. An Extended Event sessionD. A Server Audit SpecificationE. A SQL Profiler TraceF. A Database Audit SpecificationG. A Policy Answer: C

QUESTION 128You plan to install Microsoft SQL Server 2012 for a web hosting company.The company plans to host multiple web sites, each supported by a SQL Server database.You need to select an edition of SQL Server that features backup compression of databases, basic data integration features, and low total cost of ownership.Which edition should you choose? A. Express Edition with ToolsB. Standard EditionC. Web EditionD. Express Edition with Advanced Services Answer: B

QUESTION 129You plan to install a Microsoft SQL Server 2012 instance.The instance will support a database that has the following requirements:- Store Excel workbooks on the file system.- Access the workbooks through Transact-SQL.- Include the workbooks in database backups.- During installation, you need to ensure that the requirements will be met.Which feature should you use? A. Excel ServicesB. FILESTREAMC. SQL Server Integration Services (SSIS)D. OpenXML Answer: B

QUESTION 130You administer a Microsoft SQL Server 2012 instance named SQL2012.You are in the process of migrating a database from a SQL Server 2008 instance named SQL2008 to the SQL2012 instance.You have upgraded a database from the SQL2008 instance by using the side-by-side migration technique.You need to migrate the SQL Server logins from the SQL2008 instance to the SQL2012 instance.What should you do? A. Back up the master database on the SQL2008 instance.Restore the master database on the SQL2012 instance.B. Use the Transfer Logins task in a Microsoft SQL Server Integrated Services package.C. Use sp_grantlogin.D. Use xp_logininfo. Answer: B

QUESTION 131You administer a Microsoft SQL Server 2012 database instance.You create a new user named UserA.You need to ensure that UserA is able to create SQL Server Agent jobs and to execute SQL Server Agent jobs owned by UserA.To which role should you add UserA? A. DatabaseMailUserRoleB. ServerGroupAdministratorGroupC. SQLAgentUserRoleD. Securityadmin Answer: C

QUESTION 132You administer a Microsoft SQL Server 2012 database.You have a SQL Server Agent job instance that runs using the service account.You have a job step within the job that requires elevated privileges.You need to ensure that the job step can run using a different user account.What should you use? A. a scheduleB. an alertC. an operatorD. a proxy Answer: D

QUESTION 133You install a Microsoft SQL Server 2012 instance.The instance will store data extracted from two databases running on Windows Azure SQL Database.You hire a data steward to perform interactive data cleansing and ad hoc querying and updating of the database.You need to ensure that the data steward is given the correct client tools to perform these tasks.Which set of tools should you install? A. SQL Server Management Studio and Distributed Replay ClientB. Master Data Services and Data Quality ClientC. Data Quality Client and Distributed Replay ClientD. Data Quality Client and SQL Server Management Studio Answer: A

QUESTION 134You administer a Microsoft SQL Server environment.You purchase a new server and plan to migrate your database from SQL Server 2008 to SQL Server 2012.You want to evaluate to prepare for possible conflicts and issues that may arise during or after the migration.Which SQL Server tool should you use? A. Distributed ReplayB. Migration AssistantC. Data ToolsD. Upgrade Advisor Answer: D

QUESTION 135Drag and Drop QuestionsYou are migrating an OLTP database from Windows Azure SQL Database to on-premise.You are planning the installation of a Microsoft SQL Server 2012 server failover cluster.The server has the following partitions

Disk Subsystem	Storage Location	RAID Level	Capacity
C:	Local	1	100GB
D:	Local SSD	1	128GB
Partition(1)	SAN	10	500GB
Partition(2)	SAN	5	500GB

You install the operating system on the C: drive.The database solution will use row versioning, triggers, and cursors.The tempdb database cannot be placed on the same disk subsystem as the OLTP database.The OLTP database needs to be on the fastest disk subsystem possible. The database is currently 200GB in size. It will not substantially increase in size in the next 3 years.You need to plan the usage of the disk subsystems.To which hard disk should each database belong? (To answer, drag the appropriate database or databases to their corresponding hard disk or disks in the answer area. Answer choices may be used once, more than once, or not at all. Answer targets may be used once or not at all. Additionally, you may need to drag the split bar between panes or scroll to view content.

Database	Hard Disk
C: drive	SQL Server binaries
D: drive	OLTP database
Partition(1)	tempdb database
Partition(2)	database backups

Answer

Database	Hard Disk
C: drive	SQL Server binaries
D: drive	OLTP database
Partition(1)	tempdb database
Partition(2)	database backups

QUESTION 136Drag and Drop QuestionsYou administer several Microsoft SQL Server 2012 servers.You want to run scheduled checks to confirm that the databases on the servers are not configured to AutoShrink.You need to create a policy to check the condition.What should you do? (To answer, move the appropriate actions from the list of actions to the answer area and arrange them in the correct order.)

Create a new condition to check that the Database facet SHRINKDB field is set to TRUE .
Create a new condition to check that the Database facet @Autoshrink field is set to FALSE .
Create a new policy to check the condition. Set the evaluation mode to On Demand .
Create a new policy to check the condition. Set the evaluation mode to Schedule .
Create a schedule and enable the policy.
Export the schedule, the policy, and the condition to SQL files using the management studio SCRIPT AS... CREATE TO option.
Right-click on the policy in Management Studio and select Evaluate .

[www.greatexam.com](#)

Answer

Create a new condition to check that the Database facet SHRINKDB field is set to TRUE .	Create a new condition to check that the Database facet @Autoshrink field is set to FALSE .
Create a new condition to check that the Database facet @Autoshrink field is set to FALSE .	Create a new policy to check the condition. Set the evaluation mode to On Demand .
Create a new policy to check the condition. Set the evaluation mode to On Demand .	Create a schedule and enable the policy.
Create a new policy to check the condition. Set the evaluation mode to Schedule .	
Create a schedule and enable the policy.	
Export the schedule, the policy, and the condition to SQL files using the management studio SCRIPT AS... CREATE TO option.	
Right-click on the policy in Management Studio and select Evaluate .	

[www.greatexam.com](#)

QUESTION 137Drag and Drop QuestionsYou administer a Windows Azure SQL Database database used for data warehouse operations.The database contains a table named OrdersHistory, defined as follows

```
CREATE TABLE OrdersHistory
(
    OrderID bigint NOT NULL,
    CustomerID int NOT NULL,
    ShippingAddressID int NOT NULL,
    OrderDetails varchar(4000) NULL,
    ShipDate date NULL
)

CREATE NONCLUSTERED INDEX IX_OrdersHistory_OrderID
ON OrdersHistory (OrderID) INCLUDE (CustomerID, OrderDetails)

CREATE NONCLUSTERED INDEX IX_OrdersHistory_CustomerID
ON OrdersHistory (CustomerID, OrderID) INCLUDE (OrderDetails)

CREATE NONCLUSTERED INDEX IX_OrdersHistory_Shipdate
ON OrdersHistory (ShipDate) INCLUDE (CustomerID, OrderDetails)
```

A weekly ETL (extract-transform-load) runs a large INSERT statement to add data into the OrdersHistory table.The process is taking a long time to complete.You discover that the bulk of the process is performing non-clustered index updates on the OrdersHistory table.You need to improve the performance of the ETL process faster.You need to meet the following requirements:- Avoid losing existing permissions on existing objects.- Use minimal administrative effort.What should you do? (To answer, move

the appropriate actions from the list of actions to the answer area and arrange them in the correct order.

Change the INSERT statement to a SELECT INTO statement. Run the SELECT INTO statement.

Run a CREATE INDEX statement for each index.

Run a DROP INDEX statement for each index.

Run the INSERT statement.

Run the following statement: DROP TABLE OrdersHistory.

Run the following statement: ALTER INDEX ALL on OrdersHistory DISABLE.

Run the following statement: ALTER INDEX ALL on OrdersHistory REBUILD.

Answer

Change the INSERT statement to a SELECT INTO statement. Run the SELECT INTO statement.

Run a CREATE INDEX statement for each index.

Run a DROP INDEX statement for each index.

Run the following statement: DROP TABLE OrdersHistory.

Run the following statement: ALTER INDEX ALL on OrdersHistory DISABLE.

Run the INSERT statement.

Run the following statement: ALTER INDEX ALL on OrdersHistory REBUILD.

www.greatexam.com

QUESTION 138You administer a Microsoft SQL Server 2012 Enterprise Edition server that uses 64 cores.You discover performance issues when complex calculations are performed on large amounts of data under heavy system load.You need to limit the number of cores that handle the processing.What should you configure? A. Max worker threadsB. Processor affinityC. I/O affinityD. Lightweight pooling Answer: B QUESTION 139Hotspot QuestionYou administer two Microsoft SQL Server 2012 databases named Contoso and ContosoWarehouse.You plan to replicate tables from the Contoso database to the ContosoWarehouse database.Indexes will be added to the tables in ContosoWarehouse to improve the performance of reports.You need to ensure that the following requirements are met:Indexes are not modified when the subscriptions are reinitialized.Only the clustered index from Contoso will be replicated.Minimal transaction log activity during the reinitialization.What should you do? Choose the correct option(s).

Properties for All Table Articles

Article name: <Default is based on table name>

Properties:

Copy Objects and Settings to Subscriber

Copy foreign key constraints

False

Copy check constraints

False

Copy clustered index

True

Copy nonclustered indexes

Copy default value specification

True

Copy user triggers

False

Copy extended properties

False

Copy collation

True

Copy INSERT, UPDATE and DELETE

True

Copy unique key constraints

True

Copy file group associations

False

Copy table partitioning schemes

False

Copy index partitioning schemes

False

Copy user-defined statistics

False

Copy default bindings

False

Copy rule bindings

False

Copy full text indexes

False

Copy XML XSD

True

Copy XML indexes

False

Copy XML indexes

True

Copy permissions

False

Copy spatial indexes

Copy filtered indexes

Copy data compression attribute

True

Copy sparse column attribute

False

Destination Object

Destination object name: <Default is based on table name>

Destination object owner: <source Table owner>

Action if name is in use: <Drop existing object and create a new one>

Convert data types

Drop existing object and create a new one

Convert TIMESTAMP to BINARY

Delete data. If article has a row filter, delete only data that matches the filter

Create schemas at Subscriber

Truncate all data in the existing object

Convert XML to NTEXT

False

Convert MAX data types to NTEXT

False

Convert new datetime to NVARCHAR

False

Description

The description of the article.

OK

Cancel

Help

Answer

Properties for All Table Articles

Article name: <Default is based on table name>

Properties:

Copy Objects and Settings to Subscriber

Copy foreign key constraints

False

Copy check constraints

False

Copy clustered index

True

Copy nonclustered indexes

Copy default value specification

True

Copy user triggers

False

Copy extended properties

False

Copy collation

True

Copy INSERT, UPDATE and DELETE

True

Copy unique key constraints

True

Copy file group associations

False

Copy table partitioning schemes

False

Copy index partitioning schemes

False

Copy user-defined statistics

False

Copy default bindings

False

Copy rule bindings

False

Copy full text indexes

False

Copy XML XSD

True

Copy XML indexes

False

Copy XML indexes

True

Copy permissions

False

Copy spatial indexes

Copy filtered indexes

Copy data compression attribute

True

Copy sparse column attribute

False

Destination Object

Destination object name: <Default is based on table name>

Destination object owner: <source Table owner>

Action if name is in use: <Drop existing object and create a new one>

Convert data types

Drop existing object and create a new one

Convert TIMESTAMP to BINARY

Delete data. If article has a row filter, delete only data that matches the filter

Create schemas at Subscriber

Truncate all data in the existing object

Convert XML to NTEXT

False

Convert MAX data types to NTEXT

False

Convert new datetime to NVARCHAR

False

Description

The description of the article.

OK

Cancel

Help

QUESTION 140 What is the minimum recommended amount of RAM for SQL Server 2012 Enterprise? A. 512 MBB. 1 GBC. 2 GBD. 4 GBE. 8 GB Answer: B GreatExam 70-462 dumps and 70-462 practice test which contain almost 100% correct answers are tested and approved by senior Microsoft lecturers and experts. They have been devoting themselves to providing candidates with the best 70-462 study materials to make sure what they get are valuable. Comparing with others, GreatExam 70-462 exam questions are more authoritative and complete. <http://www.greatexam.com/70-462-exam-questions.html>