

## [2016-New Microsoft Exam 70-246 PDF Dump Free Download In GreatExam (16-30)

GreatExam dumps for 70-246 exam are written to the highest standards of technical accuracy, provided by our certified subject matter experts and published authors for development. We guarantee the best quality and accuracy of our products. We hope you pass the exams successfully with our practice test. With our Microsoft 70-246 practice test, you will pass your exam easily at the first attempt. You can also enjoy 365 days free update for your product.

### QUESTION 16

Configuration Manager uses site system roles to support management operations at each site. When you install a Configuration Manager site, some site system roles are automatically installed and assigned to the server on which Configuration Manager Setup has run successfully.

Which Site System Role would run the Configuration Manager services?

- A. Site database server
- B. Distribution point
- C. Management point
- D. Component server

Answer: D

Explanation:

The component server runs Configuration Manager services.

When you install all the site system roles except for the distribution point role, Configuration Manager automatically installs the component server.

### QUESTION 17

System Center 2012 Configuration Manager discovery identifies computer and user resources that you can manage by using Configuration Manager.

It can also discover the network infrastructure in your environment.

Which of the following Configuration Manager discovery methods provides details about the client installation status?

- A. Delta Discovery
- B. Heartbeat Discovery
- C. Network Discovery
- D. Active Directory System Discovery

Answer: B

Explanation:

Heartbeat Discovery is the only discovery method that provides details about the client installation status by updating a system resource client attribute that has the value Yes.

To send the Heartbeat Discovery record, the client computer must be able to contact a management point.

### QUESTION 18

For a typical DPM deployment there is a recommended RAID configuration.

This configuration provides an effective compromise between capacity, cost, reliability, and performance.

What RAID configuration is this?

- A. 1
- B. 5
- C. 0
- D. 10

Answer: B

### QUESTION 19

When you install a Configuration Manager site, several default site system roles are automatically installed for the site.

These site system roles are required for the core operation of each site and although some default site system roles can be moved to other servers, they cannot be removed from the site.

Which of the following is NOT a default role?

- A. Configuration Manager site system
- B. Enrollment point
- C. Configuration Manager site database server
- D. SMS Provider

Answer: B

Explanation:

Optional site system roles are site system roles that are not required for the core operation of a Configuration Manager site. However, by default, the management point and distribution point, which are optional site system roles, are installed on the site server when you install a primary or secondary site. Although these two site system roles are not required for the core operation of the site, you must have at least one management point to support clients at those locations.

#### QUESTION 20

Via Operations Manager you can use the Operations console to search your environment for manageable objects and then deploy an agent to any object that you want to monitor.

The process of searching your environment is called \_\_\_?

- A. Detection
- B. Discovery
- C. Penetrating
- D. Exposure

Answer: B

#### QUESTION 21

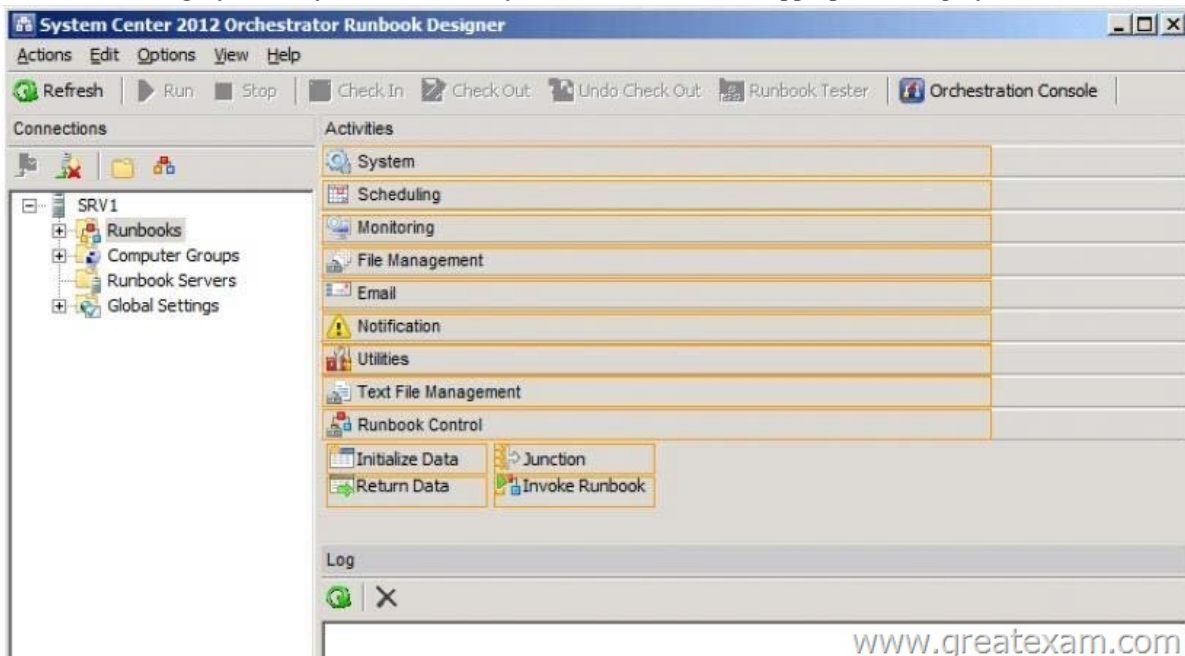
Hotspot Questions

Your company has a private cloud that contains a System Center 2012 Orchestrator infrastructure.

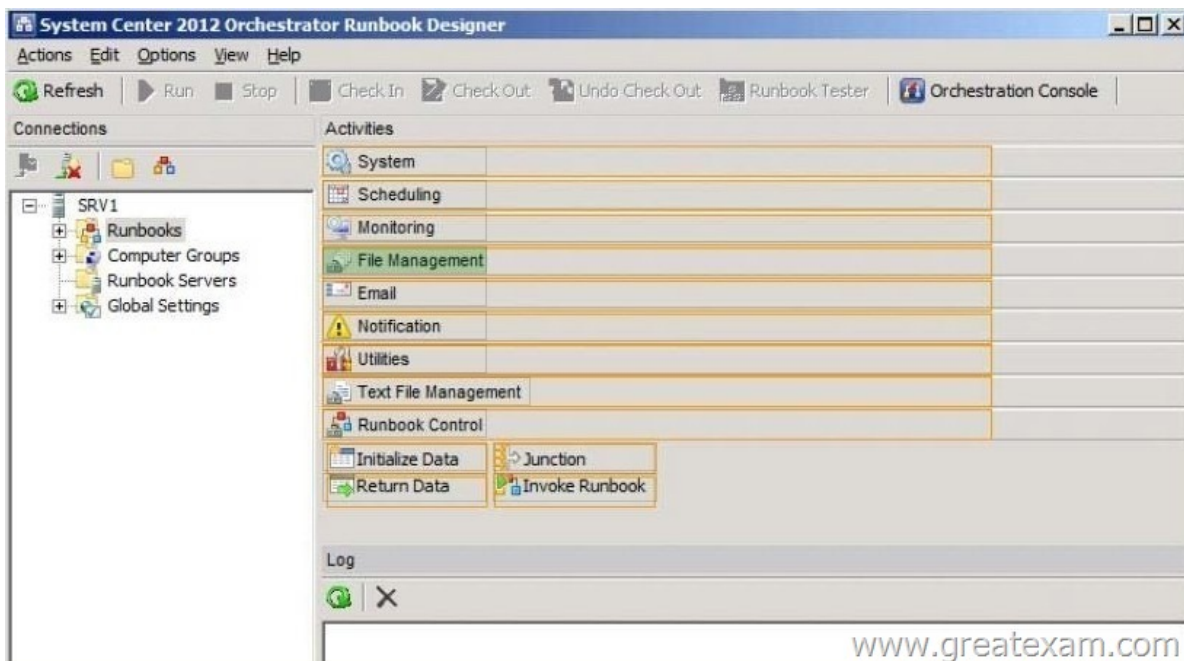
You are creating a runbook named runbook1.

You need to ensure that the workflow starts when a file is added to a folder.

From which category should you add an activity? To answer, select the appropriate category in the answer area.



Answer:



Explanation:

<http://technet.microsoft.com/en-us/library/hh440534.aspx>

In the Activities pane, click File Management to expand the category, and then drag the Monitor Folder activity into the Runbook Designer Design workspace.

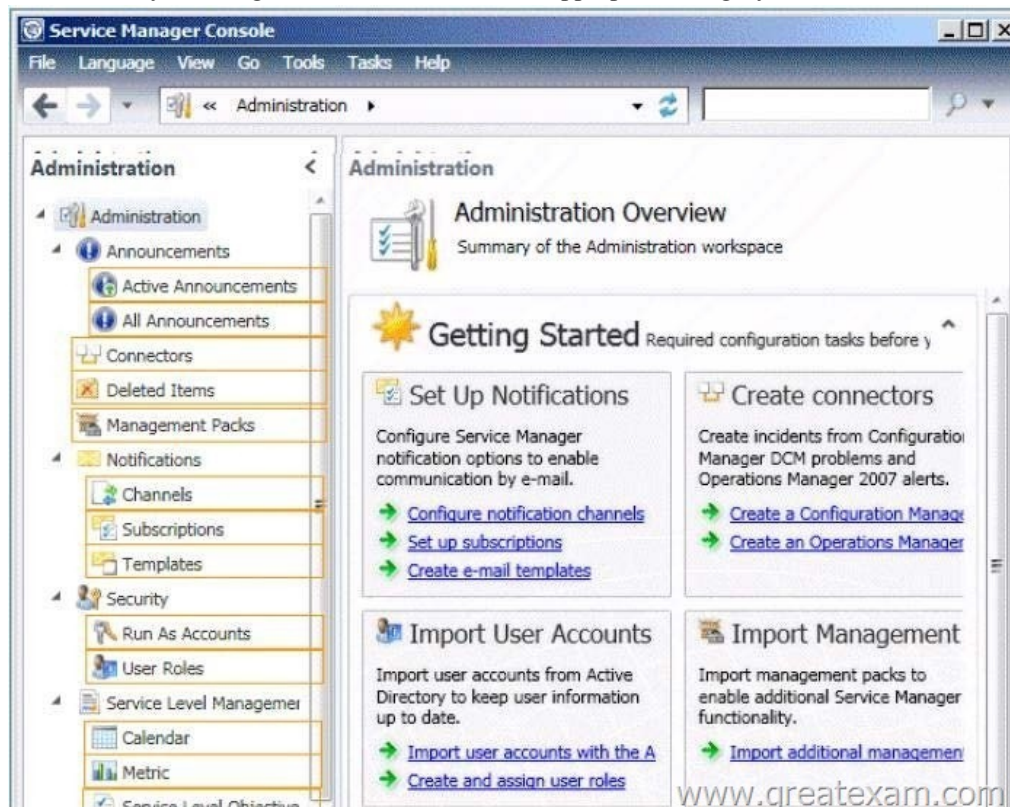
#### QUESTION 22

Hotspot Questions

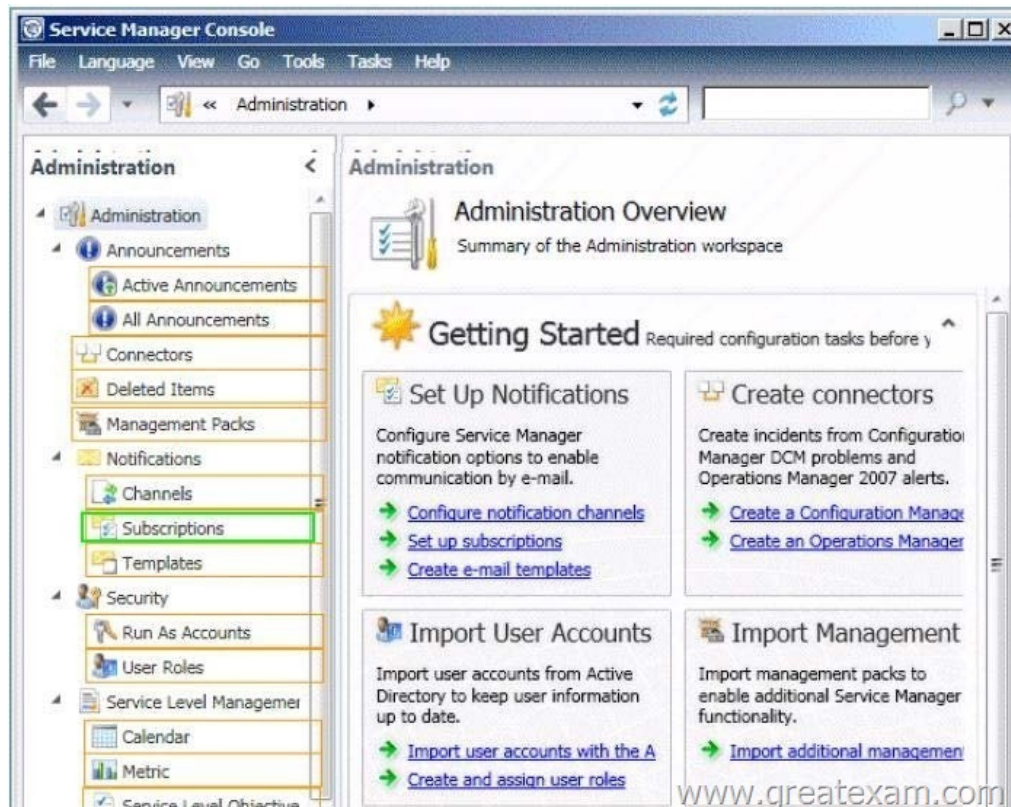
Your company uses System Center 2012 Service Manager to manage and track problems.

You need to ensure that a user named Admin1 is notified automatically when an incident is updated.

What should you configure? To answer, select the appropriate category in the answer area.



Answer:



Explanation:

<http://technet.microsoft.com/en-us/library/ff460891.aspx>

Before notifications are sent, first configure each notification channel, such as the settings for Simple Mail Transfer Protocol (SMTP). Notification messages are sent based on a notification template. Therefore, you will need to create a notification template. You can then use the Notification Subscription wizard to subscribe a group of users to a notification that will be sent whenever the changes that you specify occur.

Finally, you can verify that a notification is sent by manually generating the change.

#### QUESTION 23

Your company has a datacenter in Los Angeles that contains a private cloud.

The private cloud contains a System Center 2012 infrastructure.

The System Center 2012 infrastructure contains the following:

- Service Manager
- Orchestrator
- Operations Manager

You plan to configure the private cloud to meet the following requirements:

- Integrate runbooks to Service Manager requests.
- Automate administration tasks by using runbooks.
- Provide end users with the ability to perform administrative tasks.

You need to configure the private cloud to meet the requirements.

What should you do from Service Manager?

- Select the sync folder for the Orchestrator connector.
- Register the Orchestrator Integration Packs.
- Create a channel.
- Register a data source.

Answer: A

Explanation:

The System Center Integration Pack for System Center 2012 Configuration Manager is an add-in for System Center 2012 - Orchestrator. It enables you to automate actions within Microsoft System Center 2012 Configuration Manager, such as software and update deployment.

In addition, it allows you create and modify collections.

With this integration pack, you can also create workflows that interact with and transfer information to the integration packs for System Center Service Manager, System Center Data Protection Manager, System Center Operations Manager, and System Center Virtual Machine Manager. Configuring the System Center 2012 Service Manager Connections A connection establishes a reusable link between Orchestrator and a Service Manager Server.

You can create as many connections as you need to specify links to multiple servers.

You can also create multiple connections to the same server to allow for differences in security permissions for different user accounts.

<http://technet.microsoft.com/en-us/library/hh830706.aspx>

QUESTION 24

Your company has a private cloud that is managed by us.ng a System Center 2012 Operations Manager infrastructure.

You plan to create a distributed application named DistributedApp1.

You need to ensure that a folder for DistributedApp1 is available from the Monitoring workspace in the Operations Manager console.

What should you do?

- A. Add the OperationsManagerAppMonitoring object to DistributedApp1.
- B. Save DistributedApp1 as a new management pack.
- C. Add the OperationsManagerMonitoringView object to DistributedApp1.
- D. Save DistributedApp1 in the Default Management Pack.

Answer: B

Explanation:

The Default Management Pack file contains common elements such as views at the top level of the Monitoring workspace. This is an unsealed management pack file so that you can create views and folders at this level. It should not be used for any other purpose. For creating elements such as monitors and rules, create a new management pack file.

Selecting a Management Pack File

<http://technet.microsoft.com/en-us/library/hh457560.aspx>

The Default management pack that ships with OpsMgr 2007 is used to store very specific information for the management group. It is a widely known best practice to NOT write any custom rules, monitors, groups, views, or overrides to this MP. Even customers who know this - and try to enforce this across their organizations.... will still inadvertently get junk in their default MP.... they will save things here by accident, or by granting access to advanced operators who aren't educated on this topic.

The main problem with doing so.... is that we will build a dependency for this MP on any MP it references....and therefore we wont ever be able to delete those management packs, until we clean this Default MP up, and start enforcing best practices.

<http://blogs.technet.com/b/kevinholman/archive/2008/11/11/cleaning-up-the-default-mp.aspx>

QUESTION 25

Your company has a private cloud that is managed by us.ng a System Center 2012 Operations Manager infrastructure.

The Operations Manager management server role is installed on a server named Server1.

You deploy a server named Server2, and then join Server2 to the domain.

You log on to Server2 and install the Operations Manager agent.

You specify Server1 as the management server.

You notice that Server1 did not discover Server2.

You need to add Server2 as an agent- managed device.

What should you do from the Operations Manager console?

- A. Run the Discovery Wizard - Computer and Device Management Wizard.
- B. Modify the Global Management Server Settings - Security settings.
- C. Import the Windows Servers Base Operating System Management Pack.

D. Create a new discovery rule.

Answer: B

Explanation:

System Center Operations Manager 2012: Discovery

<http://onetechday.wordpress.com/2012/04/28/system-center-operations-manager-2012-discovery/>

By Gol: Windows Servers Base Operating System Management Pack:

<http://www.microsoft.com/en-us/download/details.aspx?id=20630>

outdated MP for Windows 2000, Windows NT, Windows Server 2003, Windows XP Most likely not the solution, although possible.

Solution should be: We did a manual Agent install

<http://technet.microsoft.com/en-us/library/hh212853.aspx>

To configure manual agent installation settings for a management group

1. Log on to the Operations console with an account that is a member of the Operations Manager Administrators role.

2. Click Administration.

3. In the Administration workspace, expand Administration, and then click Settings.

4. In the Settings pane, expand Type: Server, right-click Security, and then click Properties.

5. In the Global Management Server Settings - Security dialog box, on the General tab, do one of the following:

To maintain a higher level of security, click Reject new manual agent installations, and then click OK.

To configure for manual agent installation, click Review new manual agent installations in pending management view, and then click OK.

Optionally, select Auto-approve new manually installed agents.

QUESTION 26

Your company has a private cloud that is managed by using a System Center 2012 infrastructure. You plan to monitor a Microsoft .NET application named App1 that is hosted in the private cloud. You need to import the management packs required to monitor the application.

Which management packs should you import?

- A. the Windows Server 2008 Operating System (Monitoring) management pack and the Operations Manager APM Web IIS 7 management pack
- B. the Windows Server 2008 Operating System (Discovery) management pack and the Windows Server 2008 Internet Information Services Management Pack
- C. the Windows Server Internet Information Services 7 Management Pack and the Operations Manager APM Web IIS 7 management pack
- D. the Windows Server Operating System management pack and the Windows Server 2008 Internet Information Services Management Pack

Answer: C

Explanation:

Import the IIS 7.0 management pack (Microsoft.Windows.InternetInformationServices.2008.mp) and the Operations Manager APM Web IIS 7 management pack

(Microsoft.SystemCenter.Apm.Web.IIS7.mp).

The Microsoft.SystemCenter.Apm.Web.IIS7.mp management pack is included in the download package in the Management Packs folder--it is not available on the management pack catalog. For information about importing management packs, see Import a Management Pack. Additionally, ensure that IIS 7.0 websites, applications, and services have been discovered.

<http://technet.microsoft.com/en-us/library/hh543994.aspx>

QUESTION 27

Your company has a private cloud that is managed by using a System Center 2012 Operations Manager infrastructure.

The network contains several routers and switches.

You open the Network Devices view and discover that a switch is in a critical state.

You need to identify the availability of the switch during the past seven days.

The solution must also ensure that you can review which servers are connected to the switch.

What should you use?

- A. the Network Vicinity Dashboard

- B. the Network Node Dashboard
- C. a state view
- D. a diagram view

Answer: B

Explanation:

<http://www.techrepublic.com/blog/networking/using-the-network-dashboard-views-in-scom-2012/5226>

#### Network Node Dashboard View

A node is any device connected to a network. Switches and routers are among the most common kinds of nodes you will discover. The node dashboard provides details on the health of a particular device. The upper portion of the node dashboard consists of the network vicinity view for that node, as well as "speedometer" gauges for node availability today, yesterday, in the last week, and in the last month.

(Periods of time that were not monitored are counted as "available" in the availability statistics, so newly discovered devices will not appear to have had outages in the gauges.)

The lower portion of the node dashboard includes a list of all interfaces on the node that are being monitored.

From this view, you can manually override the automatic selections of which interfaces are monitored by SCOM. Also, by right-clicking on specific interfaces, you can pivot to performance or reporting views that drill down into the near term or long term history of an interface.

In Figure B, the Interface Packet Analysis report for "PORT 4 on "switch1 during the previous week appears in a second window.

#### QUESTION 28

##### Drag and Drop Questions

Your company has a private cloud that is managed by using a System Center 2012 infrastructure. The private cloud contains 200 servers that run Windows Server 2008 R2.

All of the servers are managed by Operations Manager.

The private cloud contains an application named App1 that is deployed on-demand to several servers. The servers that run the application are identified by a registry value set during the application's installation.

You create a monitor that targets all of the servers.

You need to modify the monitor to only affect the servers that have the application installed.

www.greatexam.com

Answer:

www.greatexam.com

Explanation:

An override is used to narrow the focus of the Monitor.

<http://technet.microsoft.com/en-us/library/hh212869.aspx>

#### QUESTION 29

Your company has a private cloud that is managed by using a System Center 2012 infrastructure. The network contains an Operations Manager infrastructure and a Virtual Machine Manager (VMM) infrastructure. The private cloud contains a clustered VMM solution that has two virtualization hosts.

The VMM solution hosts seven virtual machines.

The virtual machines are configured as shown in the following table.

Virtual machine name	Virtualization host name	Host CPU utilization
VM1	Server1	20 percent
VM2	Server1	20 percent
VM3	Server1	30 percent
VM4	Server1	20 percent
VM5	Server2	20 percent
VM6	Server2	20 percent
VM7	Server2	20 percent

You configure Dynamic Optimization to use the following settings:

- A CPU Dynamic Optimization threshold of 30 percent
- A CPU host reserve threshold of 15 percent
- Low aggressiveness

You monitor the VMM solution and discover that the virtual machines rarely migrate from Server1 to Server2 when CPU utilization exceeds the configured threshold.

You need to increase the likelihood of the virtual machines migrating from Server1 to Server2 when CPU utilization exceeds the configured threshold.

What should you do?

- A. set the Aggressiveness to High.
- B. Enable Power Optimization.
- C. Configure a host profile.
- D. Modify the CPU host reserve threshold.

Answer: A

Explanation:

<http://blogs.technet.com/b/scvmm/archive/2011/05/04/dynamic-optimization-and-poweroptimization-in-scvmm-2012.aspx>

Good post here:

What have you configured regarding the dynamic optimization?

How aggressive is the threshold for optimizing your cluster?

First of all, you must check the option "Automatically migrate virtual machines to balance load". Second, specify how aggressive the optimization should be.

The more aggressive, the more likely to live migrate VMs even for small gain.

Last, you can also configure the resource threshold for when optimization should kick in.

Default it's set to 30% CPU and 512 MB RAM.

To test and verify, right click on your cluster, and click "optimize hosts".

VMM will check if it's anything to gain, on demand, and eventually live migrate VMs to balance the load.

<http://social.technet.microsoft.com/Forums/en-US/virtualmachinmgrhypev/thread/45dfd50da2a4-4a7a-9c88-53fd7cedda77>

#### QUESTION 30

Your company has a private cloud that is managed by using a System Center 2012 Operations Manager infrastructure.



The network contains two network segments that are separated by a firewall.

You have a management server named OM1.

You create a discovery rule and configure the rule to discover SNMP devices.

You discover that only the devices on the network segment that contains OM1 are discovered. You need to ensure that the devices supporting SNMP on both network segments are discovered.

Which firewall port should you allow on the firewall?

- A. TCP 125
- B. TCP 22
- C. UDP 162
- D. UDP 161

Answer: D

Explanation:

SNMP uses the default UDP port 161 for general SNMP messages and UDP port 162 for SNMP trap messages.

<http://technet.microsoft.com/en-us/library/cc959643.aspx>

We offer standard exam questions of Microsoft 70-246 practice test. The standard exams are important if you have never taken a real exam. The accuracy of the Q&As are fully guaranteed and the number is enough to impact you passing the exam.

<http://www.greatexam.com/70-246-exam-questions.html>